

Service Folder



Third to Last Sunday after Trinity

November 10, 2019

Emmanuel Lutheran Church

4675 Bataan Memorial West

Las Cruces, New Mexico 88012

(575) 382-0220 (church office) / (575) 636-4988 (pastor cell)

www.GodWithUsLC.org

Sts. Peter & Paul Lutheran Mission

Silver City, New Mexico

www.peterandpaulmlutheran.org

Rev. Paul A. Rydecki, Pastor

member of the Evangelical Lutheran Diocese of North America (ELDoNA)

ANNOUNCEMENTS

Welcome! Emmanuel is a liturgical, traditional, historical, evangelical, catholic, orthodox, confessional Lutheran congregation, in communion with the Evangelical Lutheran Diocese of North America (ELDoNA). We believe that the Bible is the very Word of God, inspired and without any errors. We confess the truth of Scripture according to the Lutheran Book of Concord of 1580, without exception or reservation. We observe the calendar of the traditional Church Year and follow the Historic Lectionary. We celebrate the Divine Service (also known as the Mass) every Sunday and on other festivals, and we welcome visitors to hear God's Word with us.



With regard to Holy Communion, we ask our visitors to respect our practice of *closed Communion*, which means that only communicant members of our congregation or of other congregations in communion with us are invited to commune at the Lord's Table here, after they have been examined and absolved. Classes are offered throughout the year by the pastor so that those who are interested in joining our Communion fellowship have the opportunity to learn about the Christian faith and our confession of it.

The Order of Service is *The Order of Holy Communion* (page 15) from *The Lutheran Hymnal* (TLH). The Scriptures are read from the New King James Version (NKJV). The Propers (the parts that change from week to week) are noted on the following page of this Service Folder.

EVENTS IN THE NEAR FUTURE...

- Sun., Nov. 17 - Bible Class/Sunday School, 9AM
- Divine Service, 10:15 AM (Trinity 26)

Daily Lectionary for the Week of Trinity 25:

| | MORNING | EVENING |
|------------|-----------------|------------------|
| Mon | Matt. 24:29-51 | Dan. 11:36-12:13 |
| Tue | Matt. 22:23-33 | Ezek. 38:1-23 |
| Wed | 1 Cor. 15:11-50 | Ezek. 39:1-29 |
| Thu | Heb. 3:7-4:13 | Is. 43:14-25 |
| Fri | Heb. 11:8-16 | Is. 33:17-24 |
| Sat | Heb. 12:18-29 | Ezek. 37:1-14 |

HYMNS

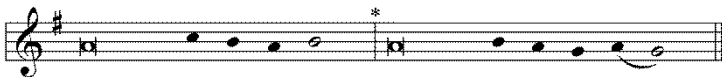
- OPENING HYMN** TLH #260 - *O Lord Look Down from Heaven Behold*
HYMN (after the Creed) TLH #393 - *From God Shall Naught Divide Me*
HYMN (after General Prayer) TLH #467 - *Built on the Rock*
DISTRIBUTION HYMNS TLH #446 - *Rise, My Soul, to Watch and Pray*
 TLH #310 - *Thy Table I Approach*

Epistle: 1 Thessalonians 4:13-18 **Gospel:** Matthew 24:15-28

The Order of Holy Communion begins on p. 15 of The Lutheran Hymnal.

THE INTROIT (after general Absolution) Psalm 31:9a, 15b, 17a; Psalm 31:1

- P** (Antiphon) HAVE MERCY on me, O Lord, for I | am in trouble; *
 Deliver me from the hand of my enemies, and from those who |
 persecute me. —
 Do not let me be | ashamed, O Lord, *
 For I have | called upon You. —



- C** In You, O Lord, | I put my trust; *
 Let me nev- | er be ashamed;—

GLORIA PATRI (p.16): **Glory be to the Father, and to the Son, and to the Holy Ghost; as it was in the beginning, is now, and ever shall be, world without end. Amen.**

- P** (Antiphon)

THE GRADUAL & HALLELUJAH (after the Epistle) Psalm 74:4,2; Ps. 46:4

- P** Your enemies roar in the midst of | Your meeting place; *
 They set up their | banners for signs. —
C Remember Your congregation, which You have | purchased of old, *
 The tribe of Your inheritance, which | You have redeemed. —
P Al- | - leluia. *
 Al- | - leluia. —
C There is a river whose streams shall make glad the | city of God, *
 The holy place of the tabernacle of the Most High. | Alleluia. —

The service continues with The Triple Hallelujah and Gospel, p.20 in the hymnal.

from The Smalcald Articles: The Power and Primacy of the Pope

It is clear that the Roman pontiffs, with their followers, defend godless doctrines and godless services. And the marks of Antichrist plainly agree with the kingdom of the pope and his followers. For Paul, in describing Antichrist to the Thessalonians, calls him an enemy of Christ, "Who opposes and exalts himself against every so-called god or object of worship, so that he takes his seat in the temple of God" (2 Thessalonians 2:4). He is not speaking about heathen kings, but about someone ruling in the Church. He calls him the enemy of Christ, because he will invent doctrine conflicting with the Gospel and will claim for himself divine authority.

Furthermore, it is clear, in the first place, that the pope rules in the Church and has established this kingdom for himself by the claim of churchly authority and of the ministry. He gives these words as a basis, "I will give you the keys" [Matthew 16:19]. Second, the doctrine of the pope conflicts in many ways with the Gospel. <Third,> the pope claims for himself divine authority in a threefold manner: (a) He takes for himself the right to change Christ's doctrine and services instituted by God, and wants his own doctrine and his own services to be observed as divine. (b) He takes to himself the power not only of binding and loosing in this life, but also jurisdiction over souls after this life. (c) He does not want to be judged by the Church or by anyone and puts his own authority ahead of the decision of councils and the entire Church. To be unwilling to be judged by the Church or by anyone else is to make oneself God. Finally, he defends these horrible errors and this impiety with the greatest cruelty and puts to death those who disagree.

This being the case, all Christians should beware of participating in the godless doctrine, blasphemies, and unjust cruelty of the pope. They should desert and condemn the pope with his followers as the kingdom of Antichrist, just as Christ has commanded, "Beware of false prophets" [Matthew 7:15]. Paul commands that godless teachers should be avoided and condemned as cursed [Galatians 1:8; Titus 3:10]. And he says, "Do not be unequally yoked with unbelievers.... What fellowship has light with darkness?" (2 Corinthians 6:14).