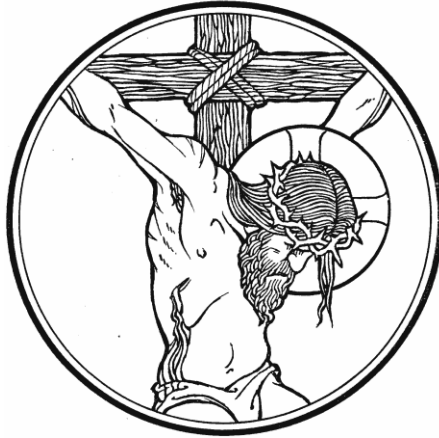


# Service Folder



**Good Friday**  
April 10, 2020

## **Emmanuel Lutheran Church**

4675 Bataan Memorial West  
Las Cruces, New Mexico 88012  
(575) 382-0220 (church office) / (575) 636-4988 (pastor cell)  
[www.GodWithUsLC.org](http://www.GodWithUsLC.org)      [pastor@GodWithUsLC.org](mailto:pastor@GodWithUsLC.org)

## **Sts. Peter & Paul Lutheran Mission**

Silver City, New Mexico  
[www.peterandpaullutheran.org](http://www.peterandpaullutheran.org)

Rev. Paul A. Rydecki, Pastor  
member of the Evangelical Lutheran Diocese of North America (ELDoNA)

---

---

## ANNOUNCEMENTS

**Welcome!** Emmanuel is a liturgical, traditional, historical, evangelical, catholic, orthodox, confessional Lutheran congregation, in fellowship with the Evangelical Lutheran Diocese of North America (ELDoNA). We believe that the Bible is the very Word of God, inspired and without any errors. We confess the truth of Scripture according to the Lutheran Book of Concord of 1580, without exception or reservation. We observe the calendar of the traditional Church Year and follow the Historic Lectionary. We celebrate the Divine Service (also known as the Mass) every Sunday and on other festivals, and we welcome visitors to hear God's Word with us.



With regard to Holy Communion, we ask our visitors to respect our practice of *closed Communion*, which means that only communicant members of our congregation or of other congregations in communion with us are invited to commune at the Lord's Table here, after they have been examined and absolved. Classes are offered throughout the year by the pastor so that those who are interested in joining our Communion fellowship have the opportunity to learn about the Christian faith and our confession of it.

**Good Friday Chief Service:** The hours of the cross began at 9 AM and last until about 3 PM. The entire Passion history will be read during the service from the Gospel of John. This service observes the true Day of Atonement on which satisfaction was made for the sins of the world through the blood of Christ, the true Passover Lamb and the fulfillment of all the Old Testament sacrifices.

The service will begin when the pastor enters the chancel. The Bidding Prayer is an ancient element of the service. In it, the people of God pray for the needs of the world, since the world's sins have been borne by Christ on the cross. Indeed, it is faith in the cross of Christ that makes our prayers acceptable to God.

The Passion reading and preaching on the death of Christ will serve as the preparation for Communion in place of the regular liturgy of the Mass. The Sacrament will be offered to those members of Emmanuel who wish to receive it.

### HOLY WEEK SCHEDULE

Easter Sunday Divine Service, 10:15 AM

---

---

# WORD, PRAYER, AND SACRAMENT FOR GOOD FRIDAY

Stand

## INTROIT

Isaiah 53:4-6; Psalm 102:1-2, 13



- P** (Antiphon) SURE- LY - || He has borne our griefs and car- | ried | our | sor- - | rows; \*  
He was wounded for our transgressions, He was bruised for our | in - - | i - - | qui- | ties.  
All we like sheep | have | gone | a - - | stray; \*  
And the Lord has laid on Him the iniqui- | ty - | of - | us | all.
- C** (spoken) **Hear my prayer, O Lord, and let my cry come to You.**  
**Do not hide Your face from me in the day of my trouble;**  
**Incline Your ear to me; in the day that I call, answer me speedily.**  
**But You, O Lord, shall endure forever, and the remembrance of Your name to all generations.**
- P** (Antiphon)

## COLLECTS

The Pastor speaks three collects, concluding each, "...world without end."

- C** Amen.

Sit

## LESSON

Isaiah 52:13 – 53:12

## TRACT

Psalm 69:20; Lamentations 1:12; Isaiah 53:5

- P** Reproach has broken my heart, and I am full of heaviness; \*
- C** **I looked for someone to take pity, but there was none; and for comforters, but I found none.**
- P** Is it nothing to you, all you who pass by? \*
- C** **Behold and see if there is any sorrow like my sorrow, which has been brought on me, which the Lord has inflicted in the day of His fierce anger.**
- P** But He was wounded for our transgressions, He was bruised for our iniquities; \*
- C** **The chastisement for our peace was upon Him, and by His wounds we are healed.**

## THE PASSION OF OUR LORD JESUS CHRIST

John 18:1-27

## HYMN

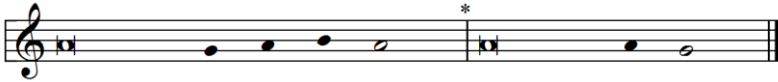
TLH #172 – O Sacred Head, Now Wounded (st. 1-5)

## THE PASSION OF OUR LORD JESUS CHRIST

John 18:28 – 19:16a

**HYMN**

TLH #172 – O Sacred Head, Now Wounded (st. 6-10)

*Stand***THE PASSION OF OUR LORD JESUS CHRIST***John 19:16b-42***ADORAMUS TE, CHRISTE****P** We adore You, O Christ, | and we bless You; \***C** For by Your holy cross You have redeemed | the world.*Sit***HYMN**

TLH #170 - O Perfect Life of Love

**SERMON***Stand***HYMN**

TLH #179 – On My Heart Imprint Thine Image

**THE BIDDING PRAYER**

*The Pastor bids the faithful to pray for various needs, and then leads them in prayer, concluding each petition, "...through (Jesus) Christ our Lord." The congregation responds, "Amen." After all the petitions have been prayed, the Pastor bids the congregation to pray:*

**THE LORD'S PRAYER***spoken by all***THE WORDS OF INSTITUTION AND DISTRIBUTION OF THE SACRAMENT**

*The Pastor shall consecrate the elements for Holy Communion, proclaiming the Words of our Lord Jesus Christ by which He instituted the Sacrament of the Altar.*

**THE PAX DOMINI AND AGNUS DEI**

TLH, page 28

*The congregation then sits, and the communicants are invited to approach the altar and receive the Lord's body and blood. Afterward, all Stand.*

**COLLECT**

**P** Hear us, we beseech Thee, O Lord, that Thy abundant blessing may be upon Thy people who have held the passion and death of Thy Son in devout remembrance, that we may receive Thy pardon and the gift of Thy comfort, and may increase in faith and take hold of eternal salvation; through the same Jesus Christ, Thy Son, our Lord, who liveth and reigneth with Thee and the Holy Ghost, ever one God, world without end.

**C** Amen.**HYMN**

TLH #168 – The Royal Banners Forward Go

*The pastor exits the chancel during the singing of the final stanza. The congregation may depart as the post-service music begins to play.*